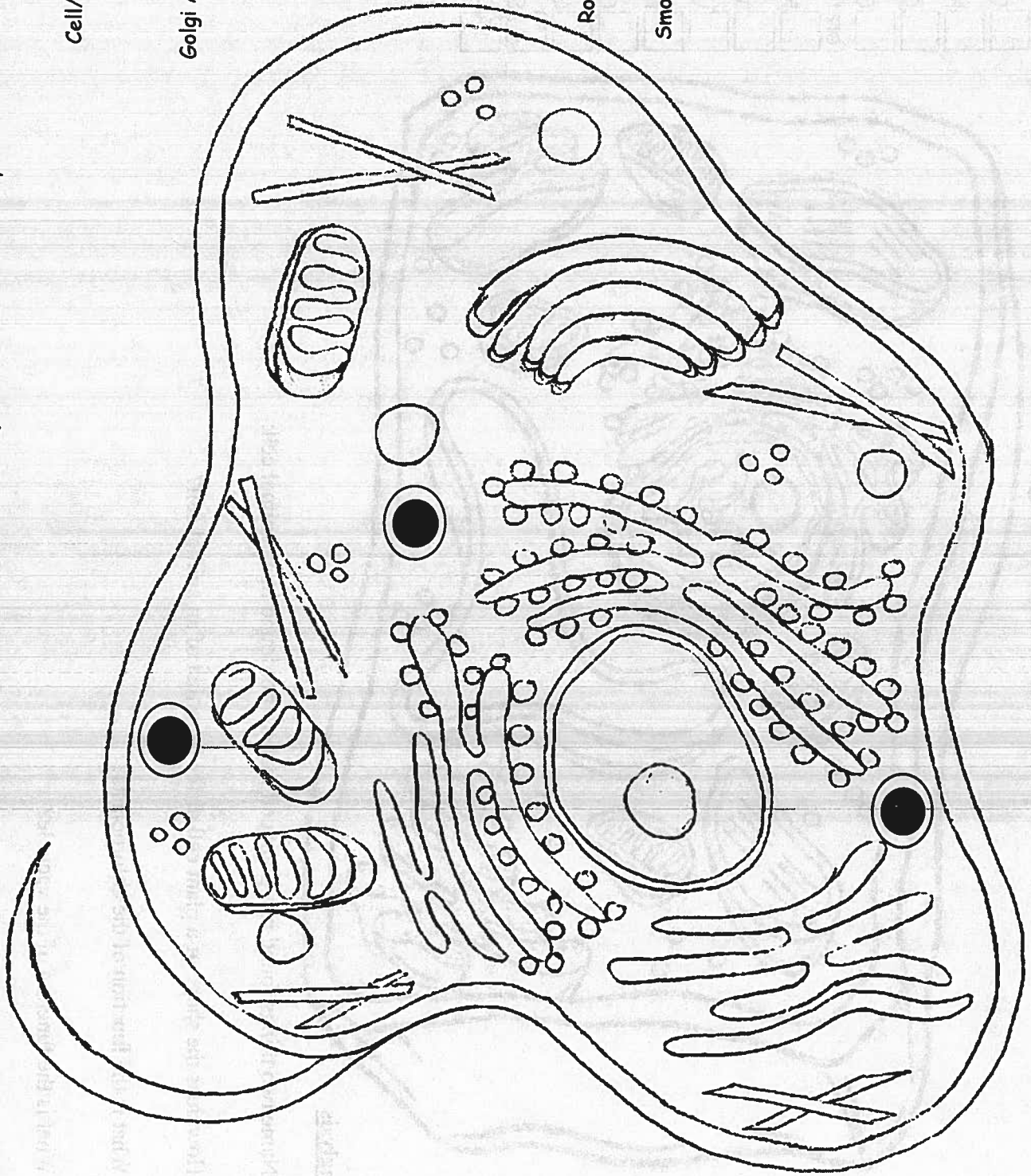


Animal Cell Coloring

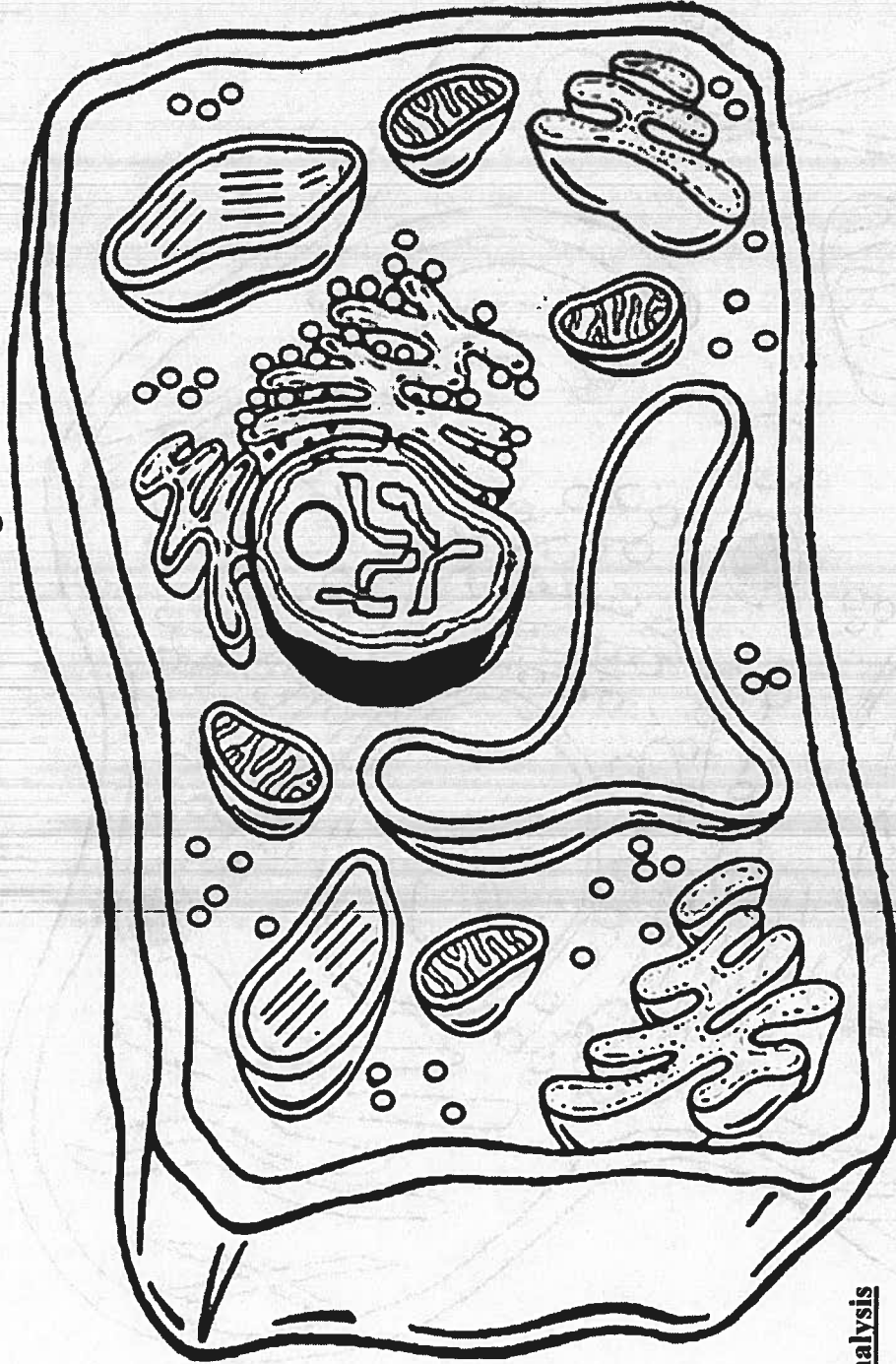
Directions: Choose a color for each of the parts below and fill in the square with the color of your choice. Color the cell part to match.

- Cell/Plasma Membrane (orange)
- Cytoplasm (white)
- Golgi Apparatus/bodies (dk blue)
- Lysosome (gray)
- Microtubules (black)
- Mitochondria (red)
- Nucleolus (brown)
- Nucleus (yellow)
- Ribosome (purple)
- Rough Endoplasmic Reticulum (Pink)
- Smooth Endoplasmic Reticulum (Pink)
- Vacuole (light blue)
- Flagella (black)



Plant Cell Coloring

- Cell Wall (dark green)
- Nucleolus (brown)
- Chloroplasts (light green)
- Cell/plasma Membrane (orange)
- Nucleus (yellow)
- Mitochondria (red)
- Vacuole (lt. Blue)
- Ribosome (purple)
- Cytoplasm (white)
- Golgi Apparatus (dk blue)
- Smooth ER (pink)
- Rough ER (pink)



Analysis

1. Name two things found in a plant cell that are not found in an animal cell:
2. How does the shape of a plant cell differ from that of an animal cell?
3. What is the function of the chloroplasts?
4. What is the function of the vacuole?
5. Why are ribosomes important?